

1-03901-01 A

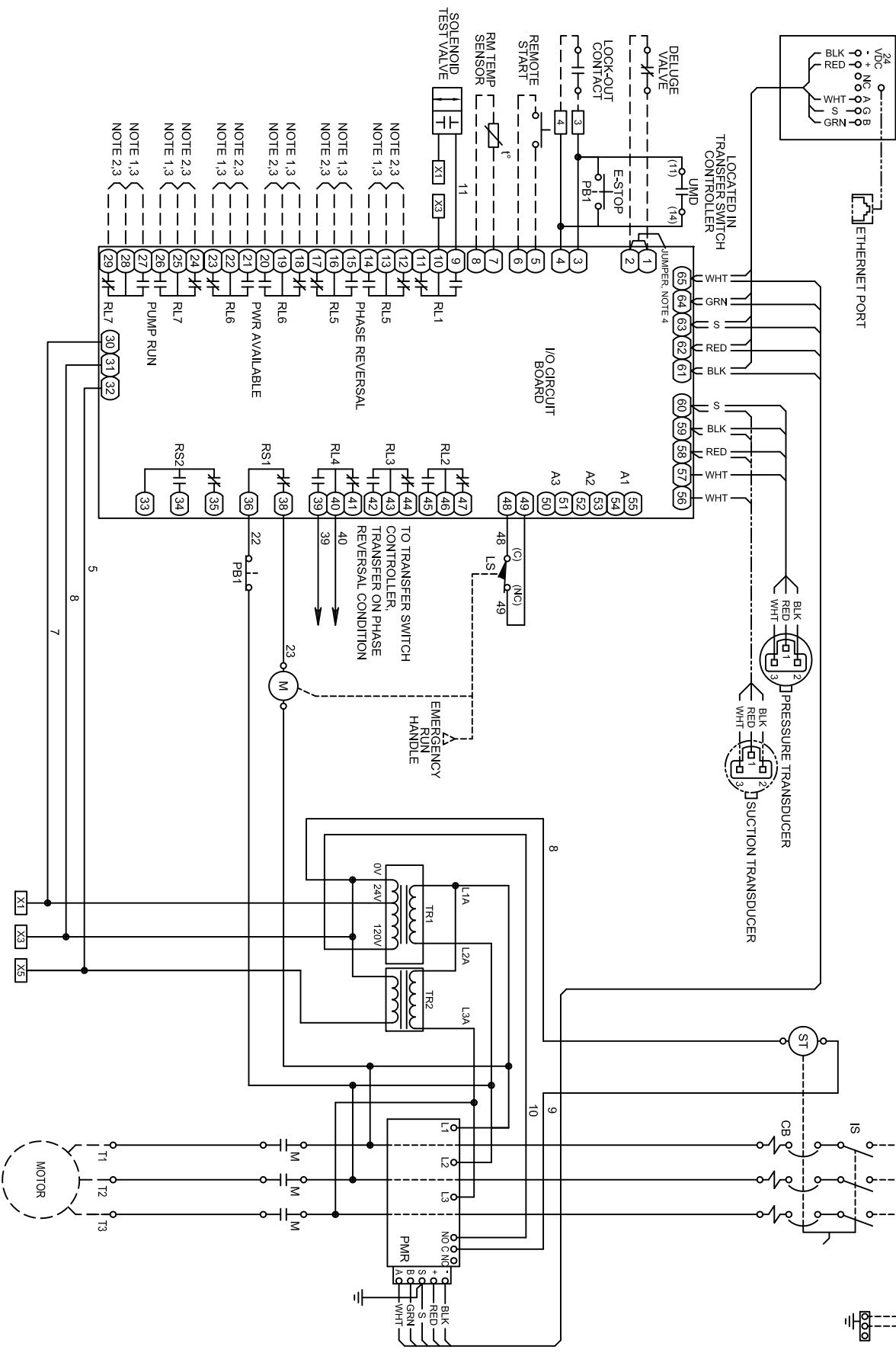
REVISIONS

NEW RELEASE
PER ECN L00141

REV A: 05-24-10
REVERSE N.O. & N.C.
CONTACTS OF RL1,
RL2 & TR3 ADDED.
ADD TEST SOLENOID
TO RL1.
ECN E0705, L&T

SUITABLE FOR USE AS SERVICE EQUIPMENT

NORMAL POWER SOURCE
L1 L2 L3
NEUTRAL OR
GROUNDED SERVICE
(CONDUCTORS)



- NOTES:
- 1 - NORMALLY OPEN, CLOSURES TO ALARM
 - 2 - NORMALLY CLOSED, OPENS TO ALARM
 - 3 - CONTACT RATING: 5 AMP MAX. 240 VAC, 30 VDC
 - 4 - REMOVE JUMPER WHEN DELUGE VALVE IN USE

- DRAWING LEGEND
- - - CUSTOMER SUPPLIED COMPONENT OR WIRING
 - CUSTOMER CONNECTION TERMINAL BLOCK
 - I/O CIRCUIT BOARD CONNECTION
 - DEVICE TERMINATION AND DESIGNATION
 - - - OPTIONAL EQUIPMENT

TITLE BUL. 10630 FIRE PUMP CONTROLLERS. MADE BY SDC APP'D DJD

DATE 04/28/08 SCALE: 0.6

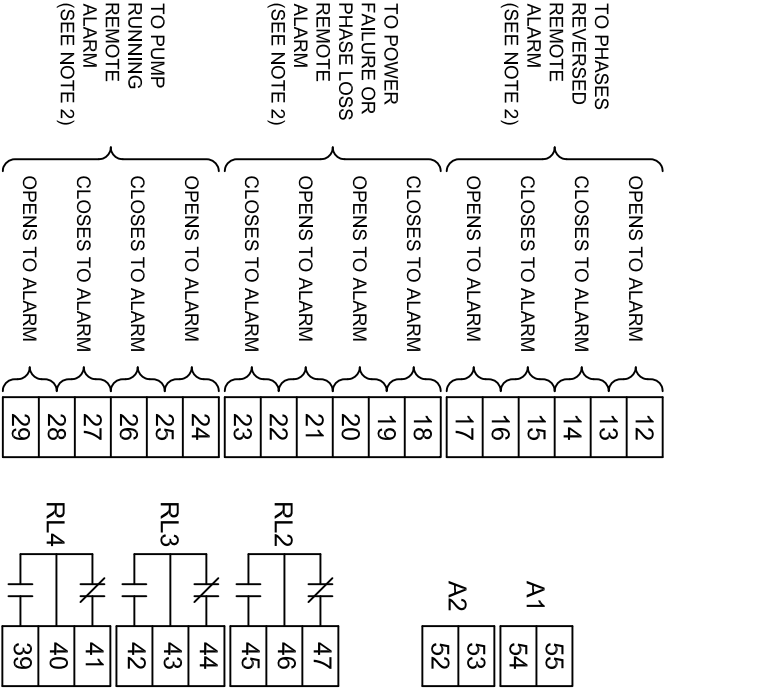
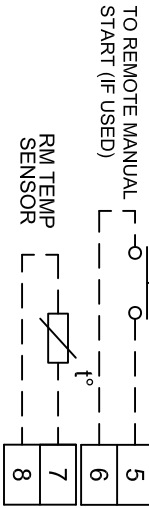
JOSLYN CLARK CONTROLS, LLC
ELIZABETHTOWN, NC 28337 USA

A 10-10630-1 SHEET 1 OF 1

DES. DWG. **E** REV. **A**

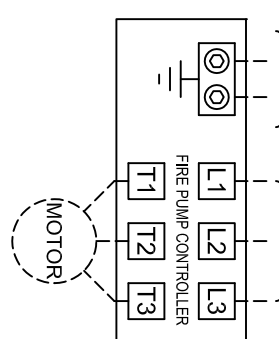
2-03901-01 A

REVISIONS	
NEW RELEASE PER ECN L00141	X1
REV A: G SERIES PRODUCT LAUNCH PER ECN E00787	X2
REV B: CORRECT WIRE SIZES PER HP FOR G SERIES. CHANGE ADDRESS. PER ECN L01585	3
	4
TO REMOTE AUTOMATIC START (SEE NOTE 1)	1
	2
TO REMOTE MANUAL START (IF USED)	5
	6
	7
	8



- NOTES:**
- REMOVE JUMPER IF A REMOTE AUTOMATIC START DEVICE IS USED. THE CONTACT ON THE DEVICE OPEN TO START THE PUMP.
 - ALARM CONTACT RATING: 5 AMP MAX, 240 VAC, 30 VDC.

NEUTRAL OR GROUND SERVICE CONDUCTOR(S)



WATER PRESSURE CONNECTION
1/2" FNPT

SUITABLE FOR USE AS SERVICE EQUIPMENT

LINE TERMINAL LUG SIZE (PER PHASE)

HORSEPOWER	WIRE CAPACITY (COPPER WIRE)				
	208 V.	240 V.	380 V.	415 V.	460 V.
5 - 25	5 - 30	5 - 30	5 - 50	5 - 60	5 - 60
	30	---	60	75	75
40 - 60	40 - 75	40 - 75	75 - 125	100 - 150	100 - 150
	75 - 150	100 - 200	150 - 350	200 - 350	200 - 400
200	250	250	400	400-450	450 - 500
	---	---	5	5	5
5 - 60	5 - 75	5 - 75	7.5 - 100	7.5 - 100	7.5 - 150
	100 - 125	100 - 125	125 - 200	125 - 200	200 - 250
75 - 100	---	---	5	5	5
	---	---	---	---	---

MOTOR TERMINAL LUG SIZE (PER PHASE)

HORSEPOWER	WIRE CAPACITY (COPPER WIRE)				
	208 V.	240 V.	380 V.	415 V.	460 V.
5 - 15	5 - 15	5 - 20	5 - 30	5 - 30	5 - 40
	20 - 30	35 - 30	40 - 60	40 - 60	50 - 60
40 - 60	40 - 60	40 - 60	75 - 100	75 - 100	75 - 125
	60 - 100	75 - 125	125 - 200	125 - 200	150 - 250
125 - 200	125 - 200	150 - 250	250 - 400	250 - 450	300 - 500
	---	---	5	5	5
5 - 10	5 - 15	5 - 15	5 - 25	5 - 25	5 - 30
	15 - 25	20 - 30	30 - 50	30 - 50	40 - 60
30 - 40	30 - 40	40 - 50	60 - 75	60 - 75	75 - 100
	50 - 100	60 - 100	100 - 200	100 - 200	125 - 250
125 - 200	---	---	---	---	---
	---	---	---	---	---

NEUTRAL OR GROUNDING CONDUCTORS

HORSEPOWER	208 V.	240 V.	380 V.	415 V.	460 V.	575 V.	WIRE CAPACITY (COPPER WIRE)
5 - 25	5 - 30	5 - 30	5 - 50	5 - 60	5 - 60	5 - 75	(1) #14 AWG - #1/0 AWG
30 - 60	40 - 75	40 - 75	60 - 125	75 - 150	75 - 150	100 - 200	(1) #3 AWG - #3/0 AWG
75 - 100	100 - 125	100 - 125	150 - 200	200 - 250	200 - 250	250 - 350	(1) #6 AWG - 350 KCMLL
125 - 200	150 - 250	150 - 250	250 - 400	300 - 450	300 - 500	400 - 500	(2) #3/0 AWG - 500 KCMLL
							(3) #3/0 AWG - 500 KCMLL

CONDUCTOR NOTES

- FOR PROPER WIRE SIZING, REFER TO THE NATIONAL ELECTRICAL CODE, NFPA 70 OR OTHER LOCAL CODES.
- CONTROLLER IS PHASE ROTATION SENSITIVE. OBSERVE PHASE ROTATION L1-L2-L3 MUST BE IN ABC SEQUENCE.
- THE LINE AND MOTOR TERMINALS WILL ACCOMMODATE, AS A MINIMUM, COPPER CABLES CAPABLE OF CARRYING 125% OF THE MOTOR FULL LOAD CURRENT.