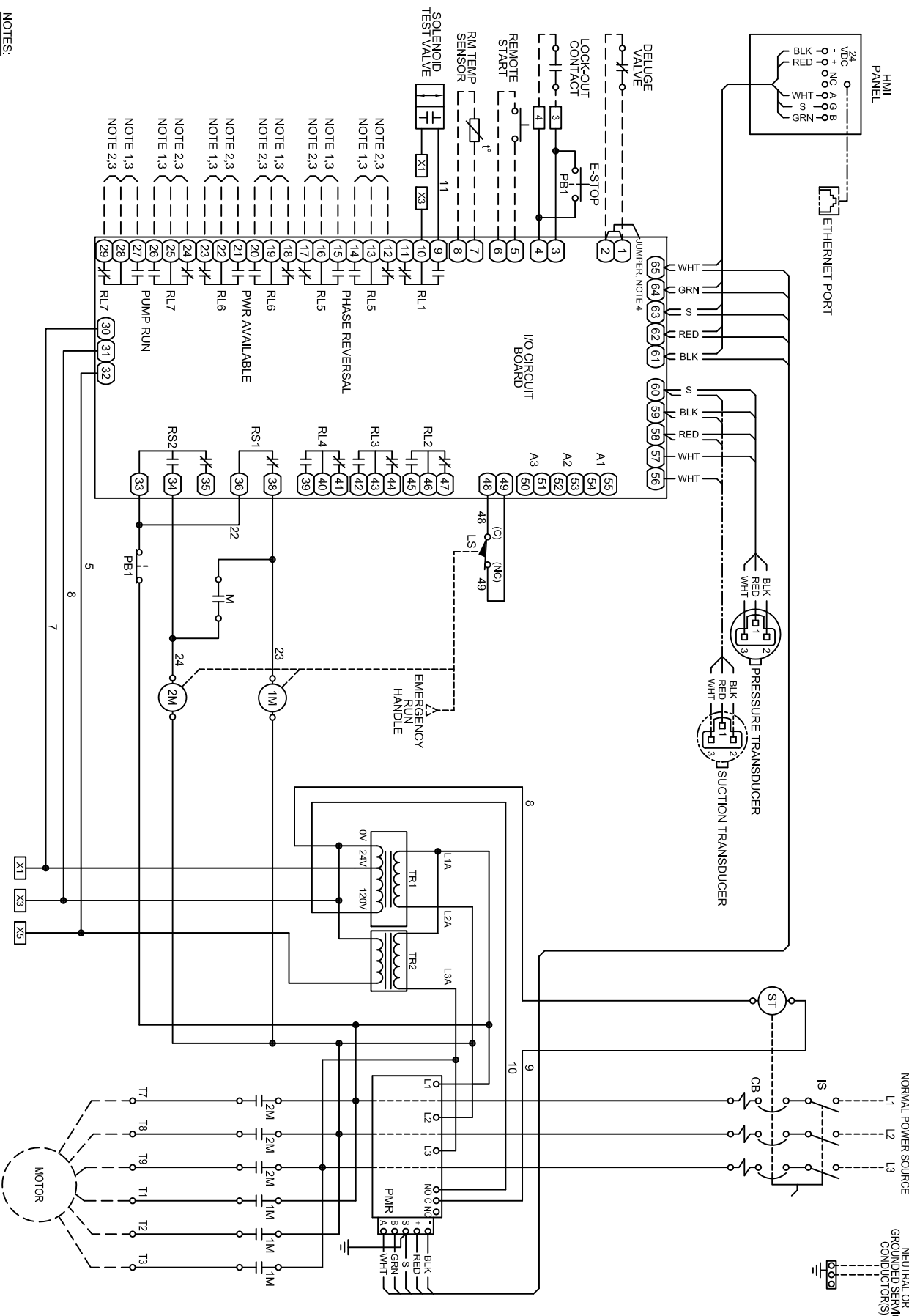


# 1-07901-01 A

REVISIONS
NEW RELEASE PER ECN L00141
REV A: 05-24-10 REVERSE N.O. & N.C. CONTACTS OF RL1, TR2 & TR3 ADDED. ADD TEST SOLENOID TO RL1. ECN E00705, L&T

SUITABLE FOR USE AS SERVICE EQUIPMENT



- NOTES:
- 1 - NORMALLY OPEN, CLOSURES TO ALARM
  - 2 - NORMALLY CLOSED, OPENS TO ALARM
  - 3 - CONTACT RATING: 5 AMP MAX, 240 VAC, 30 VDC
  - 4 - REMOVE JUMPER WHEN DELUGE VALVE IN USE

- DRAWING LEGEND
- - - CUSTOMER SUPPLIED COMPONENT OR WIRING
  - CUSTOMER CONNECTION TERMINAL BLOCK
  - I/O CIRCUIT BOARD CONNECTION
  - (A) DEVICE TERMINATION AND DESIGNATION
  - - - OPTIONAL EQUIPMENT

TITLE BUL. 10670 FIRE PUMP CONTROLLERS.  
 PART WINDING STARTING

MADE BY SDC APP'D DJD  
 DATE 06/03/08

SCALE: 0/6

**Joslyn Clark**  
 JOSLYN CLARK CONTROLS, LLC  
 ELIZABETHTOWN, NC 28337 USA

**A 10-10670-1**

SHEET 1 OF 1

DES. DWG. **E**  
 REV. **A**

