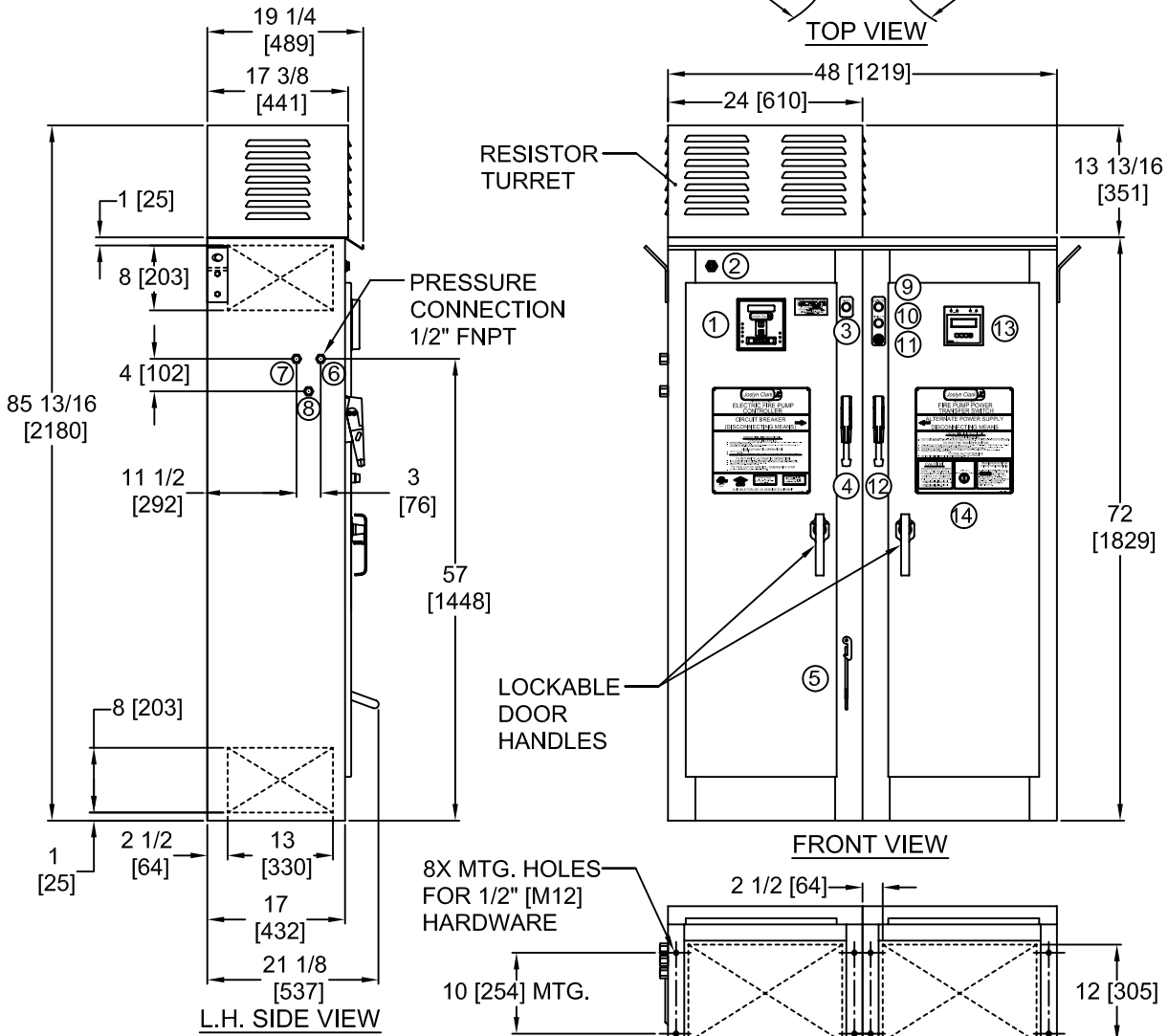


CABINET OUTLINE

TYPE 2 [IP11] , 3R [IP14]
OR 12 [IP52] ENCLOSURE.

ALL DIMENSIONS ARE
SHOWN IN INCHES / [mm]



CONDUIT ENTRANCE AREA
(BOTH SIDES & BOTTOM
OF ENCLOSURE)

- ① OPERATOR INTERFACE PANEL
- ② ETHERNET PORT CONNECTION
- ③ E-STOP PUSHBUTTON
- ④ NORMAL POWER DISC. MEANS HANDLE
- ⑤ EMERGENCY START HANDLE
- ⑥ PRESSURE TRANSDUCER
- ⑦ TEST VALVE DRAIN
- ⑧ SUCTION TRANSDUCER (OPTIONAL)
- ⑨ ALTERN. ISOL. SW. OPEN PILOT LIGHT
- ⑩ SILENCE ALARM PUSHBUTTON
- ⑪ AUDIBLE ALARM
- ⑫ ALTERN. SOURCE DISC. MEANS HANDLE
- ⑬ TRANSFER SWITCH STATUS PANEL
- ⑭ T/S NORMAL / ALTERNATE SEL. SW.

DESIGN	E	REV.	A
A10-466652-14			
JOSLYN CLARK CONTROLS, LLC LANCASTER, S.C. USA 29720-8842		FILE: 466652-14 SHEET 1 OF 1 SHEET	
PLOT FCTR: 1/22			
TITLE BUL. E10640 & E10680 FIRE PUMP CONTROLLER			
MADE BY JMO		APP'D BY JRL DATE 4/30/08	

A10-466652-14 REVISIONS RELEASED PER ECN 17009. A: MODIFIED PER ECR E00799. L&T/11-02-10	
---	--