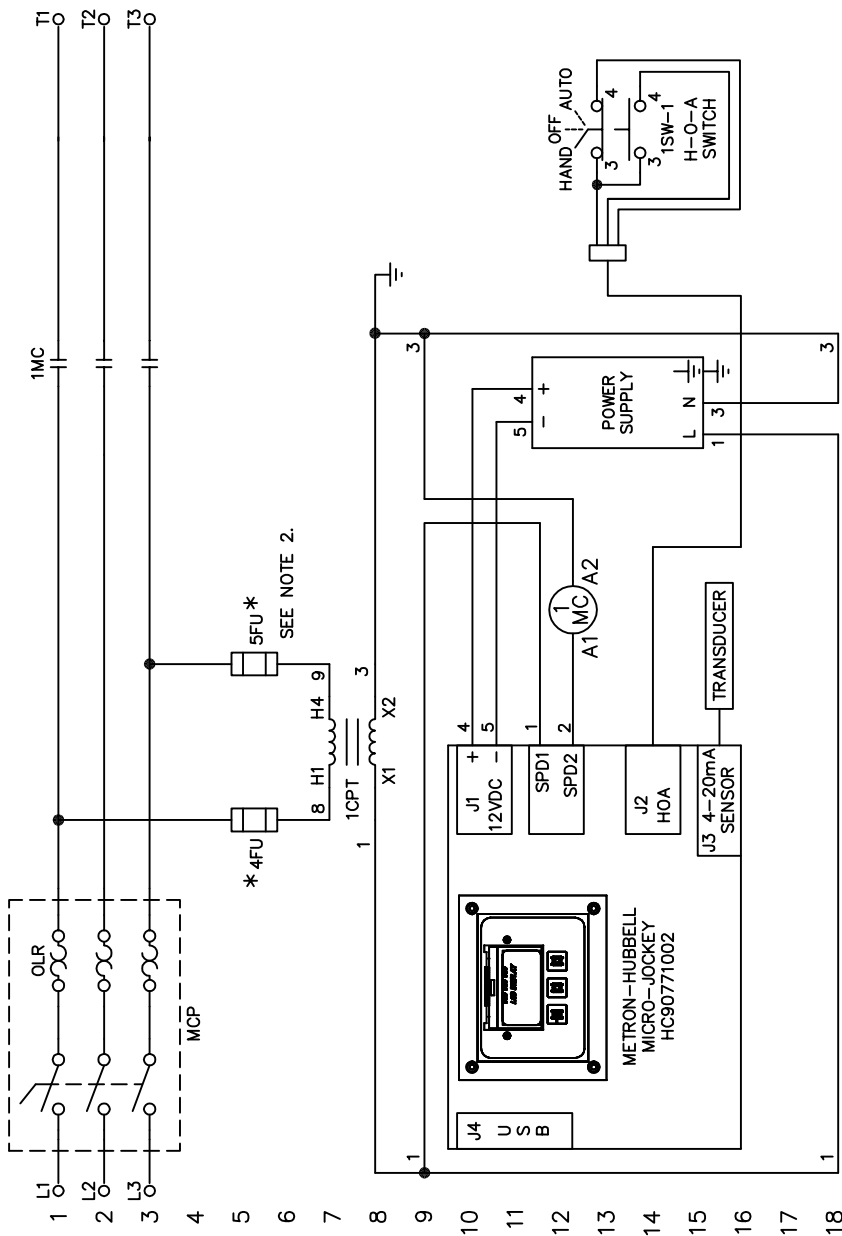




1



COMPONENTS	FUNCTION	LOCATION	CONTACTS
1CPT	CONTROL POWER TRANSFORMER	8	
1MC	MOTOR CONTACTOR	12	1,2,3
1PS	PRESSURE TRANSDUCER	18	
4FU	CONTROL FUSE	5	
5FU	CONTROL FUSE	5	
HOA	HAND/OFF/AUTO SELECTOR SW.	13	
MCP	MOTOR CIRCUIT PROTECTOR	1,2,3	

NOTES FOR FIELD WIRING:

- 1) USE COPPER WIRING ONLY EXCEPT AT TERMINALS MARKED CU-AL, 60°C FOR TERMINALS RATED LESS THAN 100 AMPS
- 2) TO REDUCE THE RISK OF FIRE, REPLACE WITH SAME TYPE AND RATING AS FUSE ORIGINALLY INSTALLED.

* CONTROL FUSE SIZING TO BE AS FOLLOWS:

V.A. RATING	200-208 VAC	220-240 VAC	380-415 VAC	440-480 VAC	550-600 VAC
75 VA	1.8 AMP	1.5 AMP	0.8 AMP	0.8 AMP	0.6 AMP
150 VA	3.5 AMP	3.0 AMP	1.8 AMP	1.5 AMP	1.25 AMP

OPTIONS LIST - OPTIONS MARKED WITH AN "X" ARE INCLUDED

C	H	L	M	S	U	V	X	Y	CUSTOM
							X		

LINKS	HOLE	ANGLES	DIMEN.	UNDIM.
0.X ±.000	PUNCH	90° ±.000	±.000	±.000
0.XX ±.000	DRILL	90° ±.000	±.000	±.000
0.XXX ±.000	REAM	90° ±.000	±.000	±.000

CADD NO.: HCMP15S3P

DATE: 10/17/2013

DR. DAMA

CK. APPR.



METRON
Division of Hubbell-ICD, Inc.
4301 Cheyenne Drive Archdale, N.C. 27263

STANDARD SCHEMATIC DIAGRAM
MP15 MICRO JOCKEY PUMP CONTROLLER
THREE PHASE

DRG. NO. 1 OF 1
HCMP15S3P



2

B



A

2



1